

## National Disability Employment Awareness Month

Each October, our nation recognizes the assorted talents and skills that more than 50 million Americans with disabilities *can* and *do* bring to the American workforce. These workers are a vital part of the American economy and exemplify this year's motto: *"America's people...America's talent...America's strength."*

This October marks the twentieth anniversary of National Disability Employment Awareness Month. Sixty-three years ago Congress enacted a law declaring the first week in October of each year to be 'National Employ the Physically Handicapped Week' in an effort to educate the American public about issues related to disability and employment. The word 'physically' was removed in 1962 in order to acknowledge the employment needs and contributions of individuals with all types of disabilities. Then, in 1988, Congress expanded the week to a month

and changed the name to National Disability Employment Awareness Month.

As part of the national effort to employ people with disabilities, Murray Ridge Center is proud to provide vocational skills training at Murray Ridge's three Work Activity Centers, and through community-based enclaves on-site at area companies. Through the Community Employment program, Murray Ridge also provides opportunities for individuals to experience employment with area businesses in supported work environments.

Through employment opportunities in the Work Activity Centers, enclave sites and community-based positions, Murray Ridge consumers gain something beyond a mere paycheck—they gain dignity and a sense of purpose. We ask all Lorain County citizens to join us this October in recognizing the talent and strength of workers with disabilities.

### Oberlin College Students Visit Murray Ridge Home for a Day of Service



Pictured left: Oberlin College student Lena Papagiannis and residents Carol Anderson, Lynn West and Tom Zbydnowski prepare to put on a show.

men students from Oberlin College. In the spirit of the College's motto, "Learning and Labor," new students devote an afternoon each fall in service to local organizations. For several years now, Murray Ridge consumers have had the pleasure of spending an afternoon with these students learning new songs, new games, new dances and new names. The day is enjoyed by all and serves as a reminder of how lives can be enriched when people of different generations, backgrounds and abilities take the time to come together.



Pictured right: Andrea Frcka and Juanita Young dance to the sounds of the sixties as housemates and guests sing karaoke.

Recently, the residents of East College Home in Oberlin opened their door—and hearts—to 13 fresh

## New Faces in Murray Ridge Places



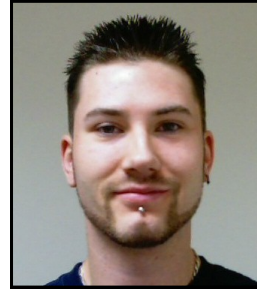
**Lauren Bobich** joins the Liberty Lane Home as a Group Home Aide/Housekeeper. Lauren is a graduate of Olmsted Falls High School and Polaris Career Center.



**Nina Medina** joins the Liberty Lane Home as a Group Home Aide/Permanent Sub. She graduated from Elyria West High School and enjoys crossword puzzles and crocheting.



**Lisa Brigadier** joins the East Ninth Street Home as a Group Home Aide/Housekeeper. Lisa enjoys the outdoors, taking walks with her dog and spending time with her family.



**Craig Milas** has been hired to Custodial Service at the Elyria Work Activity Center. Previously, Craig was a Group Home Aide at the Meister Home.



**Timothy Dustin** joins the South Professor Home as a Group Home Aide. Timothy earned a degree in psychology and cinema studies at Oberlin College. He enjoys watching movies and sports.



**Timi Zuckerman** joins the Meister Road Home as a Group Home Aide/Permanent Sub. Previously she was an Aide at the Academy Court and East Ninth Street Homes.

## Special Olympians Win Medals in Two State Tournaments



Pictured above: Members of the Murray Ridge Special Olympics Golf Team.

Members of the Murray Ridge Center Special Olympics Golf Team joined more than 100 golfers from Northeast Ohio recently to compete in the State Tournament held at Fowler's Mill Golf Club in Chesterland, Ohio. It was a beautiful, sunny day and golfers enjoyed a fierce competition, a delicious lunch and an award ceremony. When all was done, Murray Ridge golfers earned four gold, one silver, one bronze and one 4th place medal.

And while the gold team was putting its way to the golf championships, the Murray Ridge Raiders Softball Team 1 was battling its way to a different championship. After recently defeating Stark County in the Area Qualifiers, Murray Ridge Center Special Olympics Softball Team 1 advanced to the State Tournament in Oregon, Ohio. The Team was defeated in the first round by the highly-skilled Darke County Sluggers. However, the Team came back strong to defeat Darke County's second team, the Warriors, to earn the Bronze medal.



Pictured above: Members of the Murray Ridge Special Olympics Softball Team 1.

# **Please Note This Newsletter Is Going Electronic We need Your Email Address Now!**

In an effort to save money and utilize the speed of today's abundant technology, we are implementing a paperless system for the distribution of the newsletter. By emailing the newsletter to you each month, we will get it to you faster, it will appear in full-color and we will save money on printing and mailing. Money that can go toward programs, rather than to paper and postage.

**Please email Racheal Seibert, Community Education & Volunteer Manager, *no later than October 17* at [rseibert@loraincountymrdd.org](mailto:rseibert@loraincountymrdd.org) to receive future newsletters via email.**

If you need to make other arrangements for receipt of the newsletter, please call Racheal at (440) 329-3734.





## BOARD ROOM BRIEFING

The Lorain County Board of MR/DD convened at 12:30 p.m. on September 26, 2008



Superintendent Fisher informed the Board that Governor Strickland had called for an additional \$540 million general budget cut, on top of reductions earlier this year of \$733 million. In combination, these cuts resulted in a loss of \$50 million for the Ohio Department of MRDD. As a result of the most recent cuts, Murray Ridge Center will lose between \$350,000 and \$379,000 this fiscal year. In light of these and other fiscal challenges facing the agency, Dr. Fisher outlined a number of on-going management initiatives being undertaken to save funds wherever possible. She cited successful plans for cost savings in computer software, adult services, and communications through the utilization of electronic media that can reduce or replace the agency's current printing and postage costs. In other business, Al Sprague, the Director of Residential Service & Support Administration, updated the Board on the quarterly Family Support allocations, and he indicated that the group was clearly meeting goals it had set for itself, even with the most recent round of state budget cuts factored into the process. The Board unanimously approved the Requested 4<sup>th</sup> Quarter budget, and complimented Mr. Sprague and the Family Support Committee on their diligence and effectiveness. The Board officially designated President Michele Hunt as Delegate and Superintendent Fisher Alternate Delegate to the Ohio Association of County Boards of MRDD Delegate Assembly to be held October 27. Dr. Fisher reviewed some of the issues to be voted on at the assembly and stated that they would be more thoroughly explored in the coming weeks.

### Further News You Might Use...

We are often in receipt of information from external sources on offerings designed for people with MR/DD. Some examples include summer camps and special interest classes. Many such offerings have an associated cost to the participant. Although we are not in a position to "vouch for" or promote such offerings, we recognize that these opportunities may be of interest to our consumers, their families and/or guardians. If you are interested in learning more about such consumer-oriented events and opportunities, please contact Albert Sprague, Director of Residential Service & Support Administration. You may reach him by telephone at 440-324-2366.

### Reminder to Consumers Regarding Call-off Procedure



The Murray Ridge Adult Services Program would like to remind everyone to notify us when you are going to be off for the day. This is necessary to ensure the appropriate level of staffing at each facility.

If you are not going to attend, please call your work activity center (listed below) between 7:00 a.m. and 8:00 a.m. to notify us of your absence.

We thank you in advance for your cooperation and assistance in this matter!

Elyria Work Activity Center (440) 284-2720

Lorain Work Activity Center (440) 282-2131

Oberlin Work Activity Center (440) 774-7400



Did you know that Halloween candy sales in the United States average around \$2 billion each year?

**Happy Halloween!**

### Ready, Aim, Fire!



A consumer at the Elyria Work Activity Center prepares to throw a sponge soaked with shaving cream at a willing staff target at the recent annual picnic.



# October 2008

Sun Mon Tue Wed Thu Fri Sat

			1	2	3	4
5	6 	7	8	9 	10 	11
12	13 	14	15	16	17	18
19	20	21	22	23 	24 	25
26	27	28 	29	30	31 	

## Activities & Events

- 10/6—Murray Ridge Support Group meeting, 4:15 p.m., Elyria Work Activity Center, 1095 Infirmary Road, Elyria
- 10/9—Early Intervention Playgroup, 5:00-6:00 p.m. and 6:00-7:00 p.m., Murray Ridge School, 9750 S. Murray Ridge Road, Elyria
- 10/10—Agency Closed for In-service
- 10/13—Agency Closed in Observance of Columbus Day
- 10/23—Early Intervention Playgroup, 5:00-6:00 p.m. and 6:00-7:00 p.m., Murray Ridge School
- 10/24—LCBMRDD Meeting, 12:30 p.m. Administration Bldg., 1091 Infirmary Road, Elyria
- 10/28—Family Support Parent Committee Meeting, 6:00 p.m., Administration Bldg., 1091 Infirmary Road, Elyria
- 10/31—Murray Ridge Support Group Dance, 7:00 p.m., Murray Ridge School, 9750 S. Murray Ridge Road, Elyria



## Lunch Menus

Cost Per Day: Youth = \$2.65, Adults = \$2.55



October 6-10  
October 27-31

- Monday-** Ham, Wheat Bread, Rice Pilaf, Diced Carrots w/Herbs, Applesauce
- Tuesday-** Hamburger on a Bun, Potato Wedges, Corn, Crushed Pineapple, Cookie
- Wednesday-** Chicken Patty w/Gravy, Au Gratin Potatoes, Green Beans, Fruit, Wheat Bread, Cookie
- Thursday-** Pepperoni & Cheese Pizza, Tossed Salad w/Low fat Dressing, Banana, Nutri-Grain Bar
- Friday-** Macaroni & Cheese, Cooked Carrots, Diced Pears, Cookie

October 13-17  
November 3-7

- Monday-** Chicken Patty on a Bun, Potato Rounds, Corn, Crushed Pineapple, Cookie
- Tuesday-** Meat Lasagna, Tossed Salad w/Low fat Dressing, Diced Peaches, Nutri-Grain Bar
- Wednesday-** Rigatoni w/Meatballs, Green Beans, Tossed Salad w/Low fat Dressing, Wheat Bread, Cookie
- Thursday-** Pepperoni & Cheese Pizza, Tossed Salad w/Low fat Dressing, Fresh Fruit, Nutri-Grain Bar
- Friday-** Meat/Cheese Burrito, Spanish Rice, Cole Slaw, Applesauce

September 29-October 3  
October 20-24  
November 10-14

- Monday-** Salisbury Steak w/Gravy, Scaloped Potatoes, Corn, Peaches, Cookie
- Tuesday-** Ham & Cheese on Wheat Bread, Peas & Carrots, Pears, Nutri-Grain Bar
- Wednesday-** Meat Lasagna, Green Beans, Tossed Salad w/Low fat Dressing, Wheat Bread, Cookie
- Thursday-** Pepperoni & Cheese Pizza, Tossed Salad w/Low fat Dressing, Banana, Nutri-Grain Bar
- Friday-** Fish Patty, French Fries, Cole Slaw, Apple Slices, Wheat Bread, Cookie

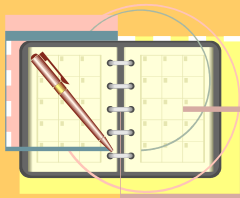
Lorain County Board of Mental Retardation  
& Developmental Disabilities

**Murray Ridge Center**  
1091 Infirmary Road  
Elyria, OH 44035

Visit our Web site  
[www.loraincountymrdd.org](http://www.loraincountymrdd.org)

Standard Presort  
U.S. Postage  
**PAID**  
Permit No. 146  
Elyria, OH 44035

## Save the Date



The 8th Annual Ohio Adult Sibling Conference will be held November 7-8 at the Marriott Airport Hotel. This annual conference is designed to give adult siblings of brothers and sisters with developmental disabilities an opportunity to share information, ideas and family experiences. This year's topics include Advocacy and Future Planning, Accessing Services and Supports, Sibling Research, The Vision of the Future and Assistive Technology.

The registration fee is \$85 and includes meals and materials. Registration can be completed online at [www.ohiosibs.com](http://www.ohiosibs.com), or you may contact Dr. Tom Fish at [fish.1@osu.edu](mailto:fish.1@osu.edu) for more information.

Limited scholarships are available through the Lorain County Board of MR/DD. For more information, contact Racheal Seibert at (440) 329-3734.

## October 20-24 is National School bus Safety Week

Now that school is back in session, it is important for all motorists to keep a few general safety guidelines in mind. Remember that yellow flashing lights on a school bus indicate that the bus is preparing to stop so other drivers should also be preparing to stop. Red flashing lights and extended gate arms indicate that the bus is loading or unloading children. In this case, on roadways with fewer than four lanes, drivers approaching from either direction must stop at least 10 feet from the bus until it resumes motion. It's not a recommendation: it's the law.

