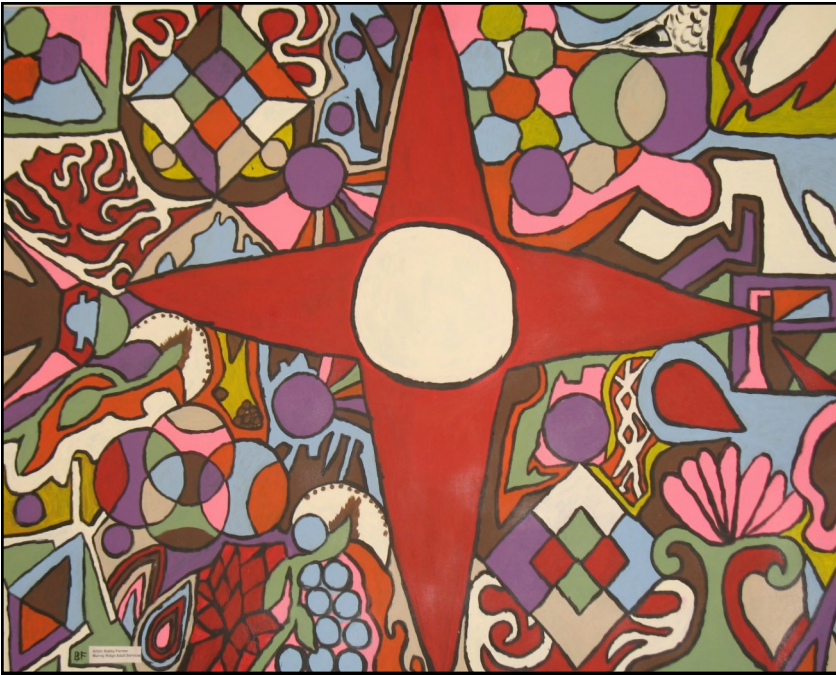


*Continued on page 2...*





***A painting by Farmer that hangs in the Service and Support Administration Building.***

years ago, I didn't feel like there was much I could do. But the staff have been so good to me and have helped me...they help so many people. I wanted to paint pictures to decorate the buildings at Murray Ridge to say 'thanks' for everything the staff has done for me."

Farmer recently painted a picture demonstrating his vision of Murray Ridge, which is somewhat similar to the style of the late Keith Haring. This painting currently appears on the cover of the 2009 Annual Action Plan and shows a variety of activities, from therapies, to work, to Special Olympics and more. "My life is better because of Murray Ridge. I try to open my heart and my eyes to do better and to have good relationships with people here." This attitude comes through in Farmer's art.

When asked what he would like to create next, he says "I don't know. I might like to try sculpting one day...but I'm not finished painting, yet."

## Getting Fit Through Tai Chi



***Murray Ridge Center consumer Amanda Spreng is one of several consumers who participates weekly in a Tai Chi class organized and assisted by staff members Karen Haller and Larry Schuman.***

## Hoops and Hollars



***Murray Ridge Raiders Team 1 member Ryan Eliason prepares to score at the recent game against the Cuyahoga rockets. Murray Ridge was victorious over Cuyahoga, scoring 44-36.***

## For the Love of the Art



***Richard Kovar proudly displays his winning card.***

Recently, consumers at the Murray Ridge Work Activity Centers in Elyria, Lorain and Oberlin participated in a "Birthday Card Contest." The purpose of the contest was to design attractive, low-cost cards to acknowledge the birthdays of the hardworking employees of Murray Ridge Center. More than 90 consumers from all three facilities accepted this challenge, and one winner per facility was chosen by a majority vote of peers and staff. The artwork produced by the participants in this competition was so well-received that the

Murray Ridge Production Center has been encouraged to consider marketing cards featuring artwork of Murray Ridge consumers to the general public. We are very proud of our artists and look forward to their next creations!

## Let Us Know What You Think....

In our continuing effort to better serve Murray Ridge consumers and their families, we would appreciate if you would **complete our web-site survey** so that we may gain insight from your experiences and ensure that our future plans and enhancements target your specific needs.

Please email your answers to the following questions to Racheal Seibert at [rseibert@loraincountymrdd.org](mailto:rseibert@loraincountymrdd.org).

1. How often do you visit the website?
2. For what reasons do you visit the website?
3. How helpful is the information found on the website?
4. What would you improve about our website?

## A Recipe for Life-long Skills

At a time when professional chefs are as famous as movie stars or athletes, it may be no surprise that many people are buying cookbooks, donning aprons and testing their culinary skills. Inspired by the Paula Deens and Molto Marios of the cooking world, the consumers at the Elyria Work Activity Center are becoming quite the gourmands, themselves. Each week, 15 consumers participate in a cooking class, led by employees **Kiki Watchorn** and **Rose Beury**. A simple, yet tasty recipe is chosen beforehand and the students learn how to follow directions, measure ingredients, safely operate kitchen tools and appliances and, of course, enjoy the fruits of their labor! While it may not reach the fervor of an "Iron Chef" competition, this activity nonetheless provides participants an inexpensive yet creative way to learn life-long skills, while also having fun. Thanks to our staff for providing valuable learning opportunities to Lorain County citizens with developmental disabilities.

***Elyria Work Activity Center consumer Elaine Jane Norton and staff Rose Beury share a laugh while preparing "Flower Biscuits."***







## A Taste of Italy

The Annual Spaghetti Dinner, sponsored by the Murray Ridge Support, will be held this year on Saturday, March 14 from 3:00-6:30 p.m. at the AmVets Post 55, 530 Abbe Road in Sheffield Lake.

This Italian feast, which includes spaghetti with meatballs, fresh bread, salad, desserts and beverages, is being generously donated by the Am-Vets Post 55. Proceeds will go toward programs and services for Lorain County citizens impacted by mental retardation and other developmental disabilities.

Tickets are \$8 for persons 6 years of age and up, and free for kids 5 and under.

Buon Appetito!



## "Staff Report Only"

As you listen to your radio or watch your television for school closings, you may wonder what it means when it's announced that "staff only" should report to Murray Ridge Center. When the weather is extremely cold or inclement, Murray Ridge must cancel its transportation services. There are two reasons for this: (1) it is dangerous to have consumers exposed to the cold for extended periods of time while they wait for the buses, and (2) driving time may be significantly extended and it is illegal for the buses to travel for more than an hour and a half with consumers.

However, individuals using personal vehicles do not suffer the same exposure time to the cold, nor is their drive time as lengthy as a bus making multiple stops throughout the county.

So, for these reasons, while agency-provided transportation must be cancelled, staff are still able to report to Murray Ridge Center and the Adult Services Day Programs are still open. **On these "staff only" days, consumers are welcome and encouraged to come to the Elyria, Lorain and Oberlin Work Activity Centers, utilizing their own transportation.**



## BOARD ROOM BRIEFING

**The Lorain County Board of MR/DD convened at 12:30 p.m. on January 30, 2009:**

At the **Organizational Meeting** the Board re-elected Michelle Hunt, President, and James Uldrich, Vice President, and elected Robert Gajdos Secretary. President Hunt welcomed new Board members, Vassie Scott and Dr. Robert Rassie, and made all sub-committee appointments.

At the **Regular Meeting** Dr. Fisher updated the Board on the success of the school's Columbia satellite classroom and recommended continuing services in the coming year, with a rate adjustment to reflect cost to be incurred in the 2009/2010 year. The Board passed a resolution to charge school districts for pre-school services not covered by ODE or other third party payments, beginning with the 2009/2010 school year. The Board unanimously passed a resolution to continue to provide educational services to children ages 6 through 21 at Murray Ridge School. Superintendent Fisher and the Director of Educational Services outlined a number of options aimed at reducing the cost of operating the annual summer camp for students at Murray Ridge School. After discussion, the Board opted to reduce the length of camp from five to three weeks. Superintendent Fisher reported that in January the agency lost another \$330,000 in state funding, bringing the total loss of state funds in FY 2009 to approximately \$700,000. The passage of the proposed American Recovery and Reinvestment Bill currently under consideration by the US Senate could result in \$2.5 billion in TANF money for the states, and a 6-8% increase in Ohio of the federal participation in Medicaid programs. Each percentage increase would amount to more than \$100,000/year in funding for Murray Ridge. Following a detailed discussion on the history, purpose and availability of Level I Waivers, the Board voted unanimously to expand Level 1 Waiver enrollments. The Director of Residential Service and Support Administration reported that seven homes each qualified for \$10,000 renovation/improvement funds, and that other plans were underway to use available state funds to replace the oldest home with one that is more accessible to the needs of those we serve. The Assistant Director of Business shared a number of recommendations made by the agency Risk Assessment Committee. In other business, President Hunt reported on a successful "Call2Action" meeting hosted by the agency on January 16, and underlined the value of suggestions shared with the group by Representative Mathew Lundy. She encouraged all Board members to communicate with public officials on matters impacting individuals with developmental disabilities. Finally, the Board unanimously approved a draft of the 2009 Annual Action Plan for public review, and gave a 30-day notice of a public forum on the document, which is scheduled for 12 p.m. on March 2 at the Administration building, 1091 Infirmary Road, Elyria. The document will be available for inspection at all Work Activity Centers, Murray Ridge School, the Service and Support Administration Building and the Administration building.



# February 2009

Sun Mon Tue Wed Thu Fri Sat

1	2 	3	4	5	6	7
8	9	10	11	12 	13 	14
15	16 	17	18 	19 	20	21
22	23	24	25	26 	27 	28

## Activities & Events

- 2/2—Murray Ridge Support Group Meeting, 4:15 p.m., Elyria Work Activity Center, 1095 Infirmary Road, Elyria
- 2/12—Early Intervention Playgroup, 5:00-6:00 p.m. and 6:00-7:00 p.m., Murray Ridge School
- 2/13—Murray Ridge Support Group Valentine's dance, 7:00 p.m., Murray Ridge School, 9750 S. Murray Ridge Road, Elyria
- 2/16—**Agency Closed in Observance of Presidents' Day**
- 2/18—Family Support Parent Committee meeting, 6:30 p.m., Administration Bldg., 1091 Infirmary Road
- 2/19—LCBMRDD Finance Committee meeting, 12:00 p.m., Elyria Work Activity Center
- 2/26—Early Intervention Playgroup, 5:00-6:00 p.m. and 6:00-7:00 p.m., Murray Ridge School
- 2/27—LCBMRDD Meeting, 12:30 p.m. Administration Bldg., 1091 Infirmary Road, Elyria



## Lunch Menus

Cost Per Day: Youth = \$2.65, Adults = \$2.70

—  
**February 16-20**  
**March 9-13**  
**March 30-April 3**

**Monday-** Salisbury Steak w/Gravy, Scaloped Potatoes, Corn, Peaches, Cookie

**Tuesday-** Ham & Cheese on Wheat Bread, Peas & Carrots, Pears, Nutri-Grain Bar

**Wednesday-** Meat Lasagna, Green Beans, Tossed Salad w/Low fat Dressing, Wheat Bread, Cookie

**Thursday-** Pepperoni & Cheese Pizza, Tossed Salad w/Low fat Dressing, Banana, Nutri-Grain Bar

**Friday-** Fish Patty, French Fries, Cole Slaw, Apple Slices, Wheat Bread, Cookie

**February 2-6**  
**February 23-27**  
**March 16-20**  
**April 6-10**

**Monday-** Ham, Wheat Bread, Rice Pilaf, Diced Carrots w/Herbs, Applesauce

**Tuesday-** Hamburger on a Bun, Potato Wedges, Corn, Crushed Pineapple, Cookie

**Wednesday-** Chicken Patty w/Gravy, Au Gratin Potatoes, Green Beans, Fruit, Wheat Bread, Cookie

**Thursday-** Pepperoni & Cheese Pizza, Tossed Salad w/Low fat Dressing, Banana, Nutri-Grain Bar

**Friday-** Macaroni & Cheese, Cooked Carrots, Diced Pears, Cookie



**February 9-13**  
**March 2-6**  
**March 23-27**  
**April 13-17**

**Monday-** Chicken Patty on a Bun, Potato Rounds, Corn, Crushed Pineapple, Cookie

**Tuesday-** Meat Lasagna, Tossed Salad w/Low fat Dressing, Diced Peaches, Nutri-Grain Bar

**Wednesday-** Rigatoni w/Meatballs, Green Beans, Tossed Salad w/Low fat Dressing, Wheat Bread, Cookie

**Thursday-** Pepperoni & Cheese Pizza, Tossed Salad w/Low fat Dressing, Fresh Fruit, Nutri-Grain Bar

**Friday-** Meat/Cheese Burrito, Spanish Rice, Cole Slaw, Applesauce

Lorain County Board of Mental Retardation  
& Developmental Disabilities

Murray Ridge Center  
1091 Infirmary Road  
Elyria, OH 44035

Visit our Web site  
[www.loraincountymrdd.org](http://www.loraincountymrdd.org)

Standard Presort  
U.S. Postage  
**PAID**  
Permit No. 146  
Elyria, OH 44035

If you have a news item that you would like to include in the Murray Ridge Courier, please email relevant photos, stories or event information to Racheal Seibert at [rseibert@loraincountymrdd.org](mailto:rseibert@loraincountymrdd.org).

Submissions are due by the 20th of each month for the following month's newsletter.



## Help Raise Money for Murray Ridge School

By participating in the Box Tops for Education Program, you can help raise up to \$20,000 for our school! Just look for the "Box Top for Education" logo on participating products at your local grocery store. Then clip the Box Top labels and bring them to Room 15 at the School.



## Further News You Might Use...

We are often in receipt of information from external sources on offerings designed for people with MR/DD. Some examples include summer camps and special interest classes. Many such offerings have an associated cost to the participant. Although we are not in a position to "vouch for" or promote such offerings, we recognize that these opportunities may be of interest to our consumers, their families and/or guardians. If you are interested in learning more about such consumer-oriented events and opportunities, please contact Albert Sprague, Director of Residential Service & Support Administration. You may reach him by telephone at 440-324-2366.

## Support the Raiders!

February 2009 **Home Games** are as follows:

- **February 2**—Team 1 vs. Stark 1, 6:00 p.m.
- **February 7**—Girls Team vs. Medina, 10:00 a.m.
- **February 7**—Team 2 vs. Medina 11:30 a.m.
- **February 10**—Girls Team vs. Stark Ladys, 6:00 p.m.
- **February 11**—Team 2 vs. Geauga, 6:00 p.m.
- **February 11**—Team 1 vs. Geauga, 7:00 p.m.
- **February 17**—Team 2 vs. Stark Blue, 6:00 p.m.