

Sherwin Williams Donates Paint & Design Services

The Sherwin-Williams Company has donated the services of its Color Design Group and products for the painting of two Murray Ridge classrooms in colors proven to be the most helpful in meeting the needs of children with Autism.

After co-sponsoring a Murray Ridge Levy Committee golf outing, Timothy Baechle, Vice President of Marketing in the company's Mid Western Division, and Jeff Winter, City Manager in the Cleveland District, inquired if there were any special painting needs at Murray Ridge School. This led to a planning meeting with Dann Swift, Director of Educational Services.

While touring the school, Swift pointed out to Winter and local Sales Representative Mike Beltz, some hallway murals done a few years ago with paint donated in part by Sherwin-Williams. That meeting and tour resulted in the company offering to donate its professional color design services, and the paint to complete a classroom project.

Under the direction of Carolyn Hruschak, an interior designer with the company's Color Design Group, a committee of designers specializing in learning and health care environments proposed a palette "most likely to be well received by children with autism."

"Interest in the Murray Ridge project was immediate and we found that the American Society of Interior Designers has supported a number of relevant research projects, but probably the most useful and most cited references are the books *In My Room*, by Antonio Torrice and *Color, Environment and Human Response* by Frank Mahnke," said Hruschak.

Based in part on that research, the Sherwin-Williams Design Group created a palette with some intriguing names: Clary



Next school year, the bare white wall behind Dann Swift, Director of Educational Services, and Supervisors, Joan Peterson and Lenora Oeftering, will be a more soothing hue.

Sage, Beguiling Mauve, Languid Blue and Chivalry Copper, for two classrooms. "I felt that the first three hues were appropriate in each color, soothing and soft, and that the Copper provided a friendly and warm contrast to the cooler shades. It is possible that one child might be drawn to the Mauve and another to the Languid Blue. By using all colors together through a space, it is my hope that each child feels included, interested and responsive," said Hruschak.

Continued on page 2

Think Spring!



Inside this Issue

Sherwin... continued	2
Child Abuse Prevention	2
The World of Autism	3
Upcoming Events	4
Employee News	5
Menus	6

For more information on the Lorain County Board of MR/DD please visit our Web site at www.loraincountymrdd.org

If you would like to receive future newsletters via e-mail, contact Katie Bevan at kbevan@loraincountymrdd.org

Sherwin... Continued from page 1

"We're really looking forward to this thoughtful approach to color in the classrooms and hope to start the painting this summer," said Swift. "The fact that Sherwin-Williams is donating all the paint, in addition to the research and design, is really generous, and really appreciated."

The Sherwin-Williams Company was founded 141 years ago in Cleveland, Ohio where it is still headquartered. It operates more than 3,000 stores in the United States, including five in Lorain County. This spring, the company will add Murray Ridge to its "Neighbor to Neighbor" program, which allows Murray Ridge supporters with a special card to receive 20 percent off list price and five percent off the sale price on all Sherwin-Williams products at any of their stores. In addition, the company will donate three percent of the proceeds from those purchases to *Friends of Murray Ridge*. For more information, phone Jeff Miller at Murray Ridge Production Center, 440/ 284-2720.



Creating a Safer Environment for Children

Prevent Child Abuse Ohio reports that in 2003 there were 95,665 reports of child abuse and neglect in the state of Ohio. The problems of child abuse and neglect are widespread. By focusing on prevention, you can help break the cycle of abuse and make a difference in your community.

In April, the Lorain County Children's Community Collaborative is hosting a variety of activities, to focus to child abuse prevention, including:

- A Panel Discussion: Multidisciplinary Approach in Responding to Child Sexual Abuse, April 11, 1-5:00 p.m., Lorain County Community College, \$5.00
- Pinwheel Rally, 1430 pinwheels, representing the number of reported cases of child abuse in Lorain County, will be on display with refreshments, speakers and entertainment available, April 13, 4:30-6:00 p.m., Lorain County Community College, Free
- Rally for Kids, April 21, Midway Mall, 10:00 a.m.-5:00 p.m., Free
- Stop Child Abuse *One Step at a Time*, 5K and 1-mile walk/run, April 28, 9:00 a.m., Bur Oak Trail, \$10-20

For additional information about the abovementioned events, contact Valerie Deptula or Heather Knoble at 440/284-3655.

Hoop Hoop Hooray!

The Murray Ridge Raiders Basketball Team I participated in the Special Olympic State Competition in Columbus on March 23 and 24. They placed fourth overall in division II.

We're very proud of your hard work, dedication and talent! Congratulations to all our athletes!

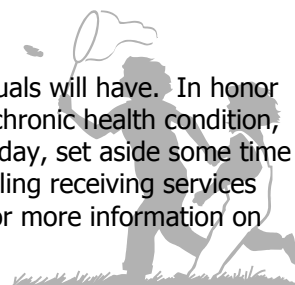


Hey Batter Batter Batter...

The Challenger Baseball League is preparing to begin a new season on May 19. Any interested school-aged individuals with disabilities are welcome to join the league. All games during the 12 week season will be played at the Vic Janowicz Park in Elyria. To join or for more information, contact Kristy at 233-6854, or Laurie at 323-3628.

National Sibling Day: April 10

Sibling relationships are like no other, and often these bonds are the longest-lasting that individuals will have. In honor of the sibling relationship, April 10 is National Sibling Day. When one sibling has a disability or chronic health condition, the depth of the relationship may become unique from all other relational connections. On this day, set aside some time to reflect, cherish and celebrate the brothers and sisters you have in your life! If you have a sibling receiving services from Murray Ridge Center, we invite you to get involved in the Murray Ridge Support Group. For more information on participating, contact Nancy Prokupek at 440/933-6400.





Taking a Closer Look Into the World of Autism

April marks National Autism Awareness Month. With a reportedly rising rate of incidence, Autism Spectrum Disorders have become a topic of national concern. According to the Centers for Disease Control, Autism may now affect as many as one in 150 eight-year-olds in the United States. Many researchers believe that Autism is one of the fastest-growing developmental disabilities in the nation, but there is controversy regarding many aspects of the disorder.

The Autism Program at Murray Ridge School (MRS) includes 36 children with Autism Spectrum Disorders. Since the degrees of Autism vary from one person to another, our Program focuses on individualized treatment and alternative learning styles.

For more than five years, MRS and Oberlin College have collaborated to allow college students the opportunity to tutor children with Autism Spectrum Disorders. This spring semester, as part of a practicum course, 14 college students visit Karen Davis' classroom weekly to gain practical field experience by assisting children with Autism in a variety of interests.

These interns interact with students by reading books to them, listening to music with them, assisting them with educational programs on the computer, and, working with our professionals, helping students to develop fine or major motor skills.

Karen Davis, Autism classroom teacher at MRS, said, "The [college] students do such a great job with our children." She adds, "My students' parents have all been



During a weekly visit, Murray Ridge School student, Josh pieces a puzzle together with Oberlin College student, Kate.

very receptive to the college students working in our classroom. This [collaboration] gives our students the opportunity to expand their socialization, and focus on interacting with others."

This semester-long project affords all individuals involved the opportunity to learn in an interactive and stimulating environment. This learning experience has benefited the Oberlin College students and the children attending Murray Ridge School in ways far beyond what the eye can see.



On March 20, seniors from the Elyria Work/Activity Center took a tour of Elyria City Hall. During the community outing, they became more familiar with the history of the building, and with the various city departments. In addition, Mayor Bill Grace stopped by to greet our consumers and thank them for visiting.

Murray Ridge School News



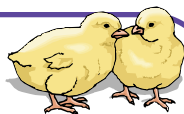
Spring Break

Murray Ridge School will be closed April 6-13, resuming on April 16. However, playgroups will continue to be held during break.

Early Intervention

Playgroup themes for April include eggs, bunnies, rain showers and the color yellow. *Please remember to contact your EI Specialist if you are unable to attend your assigned playgroup session.*

April 2007



Sun Mon Tue Wed Thu Fri Sat

1 2 3 4 5 6 7

8 9 10 11 12 13 14

15 16 17 18 19 20 21

22 23 24 26 27 28

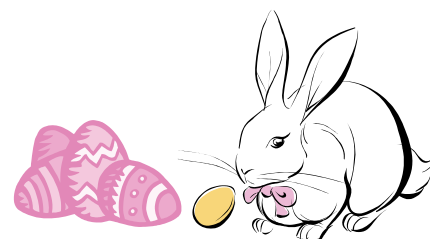
29 30

Easter Fun Facts

- The first chocolate eggs were made in Europe during the 19th century. Today, they are among the most popular treats associated with Easter
- According to the Guinness Book of World Records, the largest Easter egg ever created was over 25 feet tall, and weighed in at 8,968 pounds. The enormous candy egg was supported by an internal steel frame
- The National Confectioners Association claims that in the United States:
 - Seventy-six percent of people eat the ears on chocolate bunnies first
 - Each year, 90 million chocolate bunnies are produced in honor of Easter
 - Annually, 16 billion jelly beans are made just for Easter. Kids' favorite jelly beans are red
 - More than 3/4 of parents carry on the tradition of making Easter baskets for their kids

Murray Ridge Center Events

- 4/3- Murray Ridge Support Group Meeting, Lorain Work/Activity Center, 4360 Oberlin Ave., Lorain, 4:15 p.m.
- 4/6- All Agency Facilities Closed- Good Friday
- 4/9-13- Murray Ridge School Closed- Spring Break
- 4/12- Early Intervention Evening Playgroup, Murray Ridge School (MRS), 9750 S. Murray Ridge Rd., Elyria, 5-6:00 p.m. and 6:00-7:30 p.m.
- 4/18- Market Day Pick-Up, MRS, 3-4:30 p.m.
- 4/18- Family Support Parent Committee Meeting, Administration Building, 1091 Infirmary Rd., Elyria, 6:30 p.m.
- 4/21- Annual Spaghetti Dinner, MRS, 5-7:00 p.m.
- 4/25- LCBMR/DD Meeting, Administration Building, 7:30 p.m.
- 4/26- Early Intervention Evening Playgroup, MRS, 5-6:00 p.m. and 6:00-7:30 p.m.



Annual Spaghetti Dinner

One night every spring the gymnasium at Murray Ridge School (MRS) is filled with the delicious aroma of garlic and marinara sauce, while sweet melodies by the likes of Dean Martin linger in the background. This year's Annual Spaghetti Dinner, benefiting the Murray Ridge Support Group will be held on Saturday, April 21 from 5-7:00 p.m. at MRS.



Adults: \$8
Children, 6 and up: \$5
Children, 5 and under: FREE!

Please join us in supporting the Murray Ridge Support Group at their Annual Spaghetti Dinner on April 21.



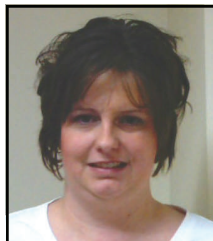


New Faces in Murray Ridge Places

Please welcome the newest members of the Lorain County Board of MR/DD family. We wish you the best as you begin your career with our organization!



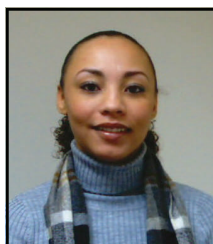
Penfield Township resident, **Beverly Behner** recently joined the staff at the Meister Road Group Home as a Group Home Aide. In her spare time she enjoys being involved in her four daughters' activities. Behner is also a licensed realtor.



New addition to S. Professor St. Group Home, **Carla Jancura** joins the Agency as a Group Home Aide. She and husband Dave reside in LaGrange with their two daughters, Kayla and Zoey.



Elyria resident, **Madeline Patterson-Johnson** joins the staff at E. Ninth St. Group Home as a Group Home Aide-Permanent Substitute. In her free time, Johnson enjoys creating delicious dishes in the kitchen.



Dawn Witherspoon, Oberlin resident, assumes a Group Home Aide position at S. Professor St. Group Home. In 2006, she earned a Bachelor of Science in Biobehavioral Health from Pennsylvania State University. She enjoys playing sports and reading.

Upcoming Conferences & Workshops

Domestic Violence & MR/DD

Presented by Peg Calvey and Jeff Camp
AVERT Program

April 19, 4:30-6:40 p.m., Elyria Work Activity Center

** To register, contact Laura Barney at 440/329-3734.*

Brain Gym 101

Brain Gym, developed by Paul E. Dennison, PhD., uses simple movements to integrate left and right brain functions for a task. The movements are easy, enjoyable and can bring about improvements in concentration, memory, reading, writing, organizing, listening, physical coordination and more.

Conducted by Pamela Fox Denzler, OTR/L, and Barbara Latona Samson, M.Ed.

June 18, 8:00 a.m.-5:30 p.m., June 19 and 20, 8:30 a.m.-5:30 p.m., Murray Ridge School, 9750 S. Murray Ridge Rd., Elyria, 44035

** For more details on this course, please visit www.loraincountymrdd.org.*

** To register, contact Pam at 440/892-9232, or tdenzler@ameritech.net, or Barb at 440/942-8811, or kneesthetic@aol.com*



Movin' On Up...



Congratulations to **Anne Gndt** who recently transferred as Group Home Aide at the E. Ninth St. Group Home to a Service and Support Administrator.

Board Room Briefing

The Lorain County Board of MR/DD convened at 7:30 p.m. on March 21.

The Board voted to rescind the current policy of *Reporting and Handling of Consumer Unusual Incidents/Accidents*, and to adopt a new policy, *Handling of Consumer Incidents Adversely Affecting Health & Safety* in light of numerous recent changes in the administrative rules. Superintendent Fisher gave a quarterly report on the recently reorganized approach to the Family Support Program. All indications are that the new approach is working effectively, and the Board voted to apply the previously established formula to the Quarter Two Family Support allocations. Dr. Fisher cautioned the Board that while governor Strickland's first budget is sensitive to the needs of the MR/DD population, the fiscal projections do not reflect pending inflationary rises, and she noted that while waiver coordination costs will expand under his new budget, there will be no new money to meet the rising demand for the corollary SSA function.

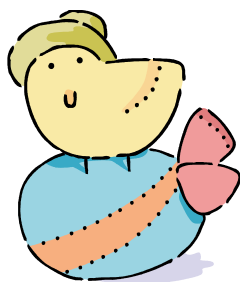


Lorain County Board of Mental
Retardation & Developmental Disabilities

Murray Ridge Center
1091 Infirmary Road
Elyria, OH 44035

Standard Presort
U.S. Postage
PAID
Permit No. 146
Elyria, OH 44035

Visit our Web site,
www.loraincountymrdd.org



Lunch Menus for Murray Ridge Center

Cost Per Day: Youth = \$2.45, Adults = \$2.50

Week of April 9-13 and April 30 - May 4

Monday- Ham, Rice Pilaf, Diced Carrots
w/Herbs, Applesauce

Tuesday- Hamburger on a Bun, Potato
Wedges, Corn, Crushed Pineapple, Cookie

Wednesday- Chicken Patty w/Gravy, Au
Gratin Potatoes, Green Beans, Fruit,
Wheat Bread, Cookie

Thursday- Pepperoni & Cheese Pizza,
Tossed Salad w/Low fat Dressing,
Banana, Nutri-Grain Bar

Friday- Macaroni & Cheese, Cooked
Carrots, Diced Pears

Week of April 16-20

Monday- Chicken Patty on a Bun, Potato
Wedges, Corn, Crushed Pineapple, Cookie

Tuesday- Meat Lasagna, Tossed Salad
w/Low fat Dressing, Diced Peaches,
Nutri-Grain Bar

Wednesday- Rigatoni w/Meatballs,
Green Beans, Tossed Salad w/Low fat
Dressing, Wheat Bread, Jelly, Cookie

Thursday- Pepperoni & Cheese Pizza,
Fresh Fruit, Nutri-Grain Bar

Friday- Meat/Cheese Burrito, Spanish
Rice, Cole Slaw, Applesauce

Week of April 2-6 and April 23-27

Monday- Salisbury Steak w/Gravy,
Scalloped Potatoes, Corn, Peaches,
Cookie

Tuesday- Ham & Cheese on Wheat
Bread, Peas & Carrots, Pears, Nutri-Grain
Bar

Wednesday- Meat Lasagna, Green
Beans, Tossed Salad w/Low fat Dressing,
Wheat Bread, Cookie

Thursday- Pepperoni & Cheese Pizza,
Tossed Salad w/Low fat Dressing,
Banana, Nutri-Grain Bar

Friday- Fish Patty, French Fries, Cole